



WELCOME



BRIEFING FOR PARENTS Primary 6

14.1.2022

Sharing Items:

- ❖ AGPS Identity
- ❖ Level Programmes
- ❖ Revised PSLE Scoring System
- ❖ Direct School Admission (Secondary) (DSA – Sec)

Sharing Items:

- ❖ **AGPS Identity**
- ❖ Level Programmes
- ❖ Revised PSLE Scoring System
- ❖ Direct School Admission (Secondary) (DSA – Sec)

Our Vision

To Build
a Community
of Aspiring
and Gracious
Learners

Collaborating through quality relationships

Persevering to give off one's best, seeking new improvements and challenges, **innovating**

Demonstrating RICE– being gracious and **caring**

Learning in the 4 AGPS domains → AGPS Experience

Our Mission

Nurture Talents

Identify needs and talents of students, providing opportunities for students' growth and development in areas of interest

Develop Character

Instil students with school values and shape their thoughts and behaviour in line with school vision

Groom Leaders

Equip students with skills in leading and serving others, contributing back to society

ASPIRE

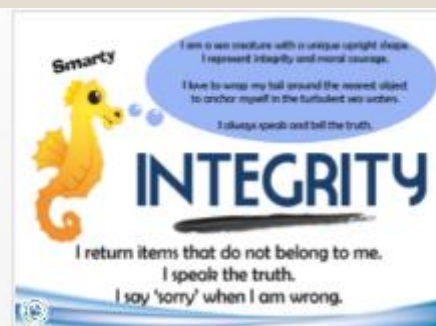
GROW

SERVE

Our Motto

Our Values

Respect	For self, others, rules, environment Show care, concern, develop harmonious relationships
Integrity	Honesty in words and actions Walk the talk and practise what one preaches Self-management
Confidence	Belief in one's ability, self-awareness Taking up new challenges, not afraid of failure Not afraid to make mistakes and to admit them
Excellence	To be the best one can be, aspire towards goals, continuous learning Stay focused and consistency in producing quality work Sportsmanship, supporting each other Perseverance, resilience towards goals.



School Philosophy

In Anchor Green, we believe that every INDIVIDUAL

- wants to learn when opportunities are given
- has the potential to learn and develop to his/her fullest potential
- learns better in a happy and nurturing environment
- can be taught good values and habits
- can achieve all round development

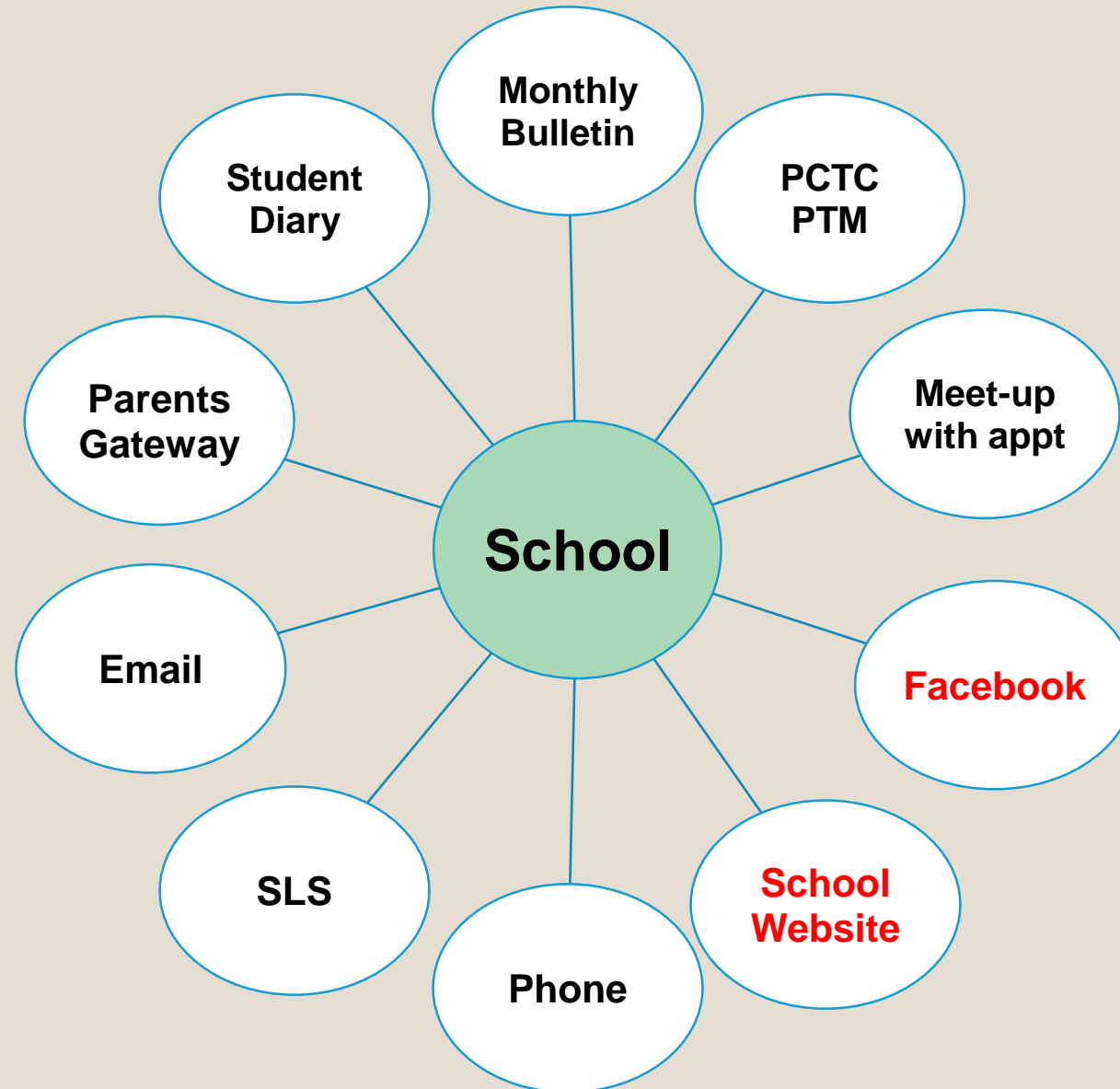


Positive Education in AGPS

Promote Student Well-Being via

- 1) a caring and enabling school environment and culture
- 2) a network of system of support eg: Peer Support & Relationship & Teacher - Student Relationship
- 3) explicit teaching of knowledge and skills via FTGP and CCE lessons
- 4) talks by school counsellor, Year Head and School Leaders
- 5) collaborative partnership with parents

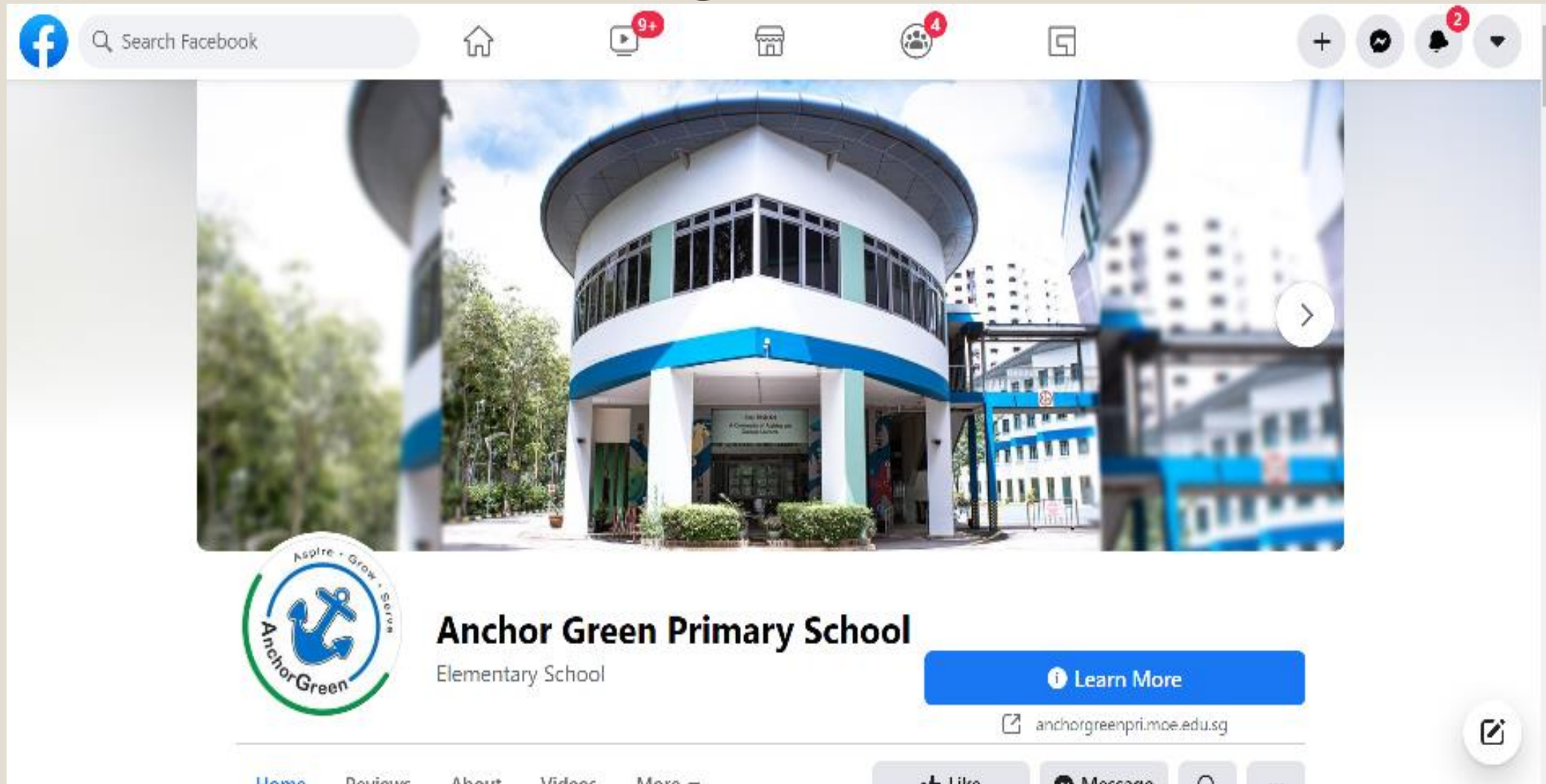
Channels of Communication



School's website



School's FB page



Sharing Items:

- ❖ AGPS Identity
- ❖ **Level Programmes**
- ❖ Revised PSLE Scoring System
- ❖ Direct School Admission (Secondary) (DSA – Sec)

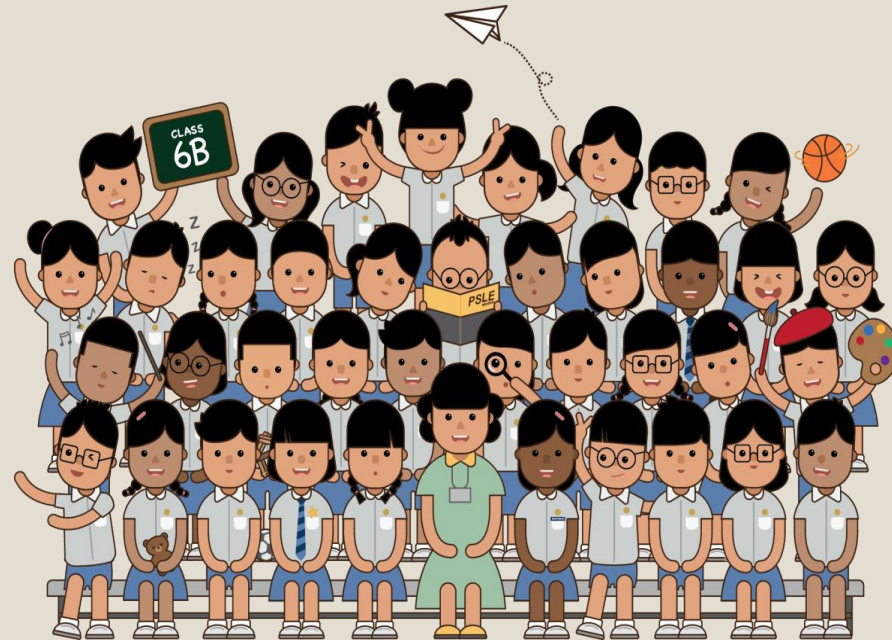
Key Programmes for Primary 6

- P6 I-Cube Camp
(**I**nvolve, **I**nspire and **I**gnite)
- Support Programmes
- AG STARs
- Post PSLE Activities

Sharing Items:

- ❖ AGPS Identity
- ❖ Level Programmes
- ❖ **PSLE Scoring System**
- ❖ Direct School Admission (Secondary) (DSA – Sec)

PSLE SCORING & S1 POSTING



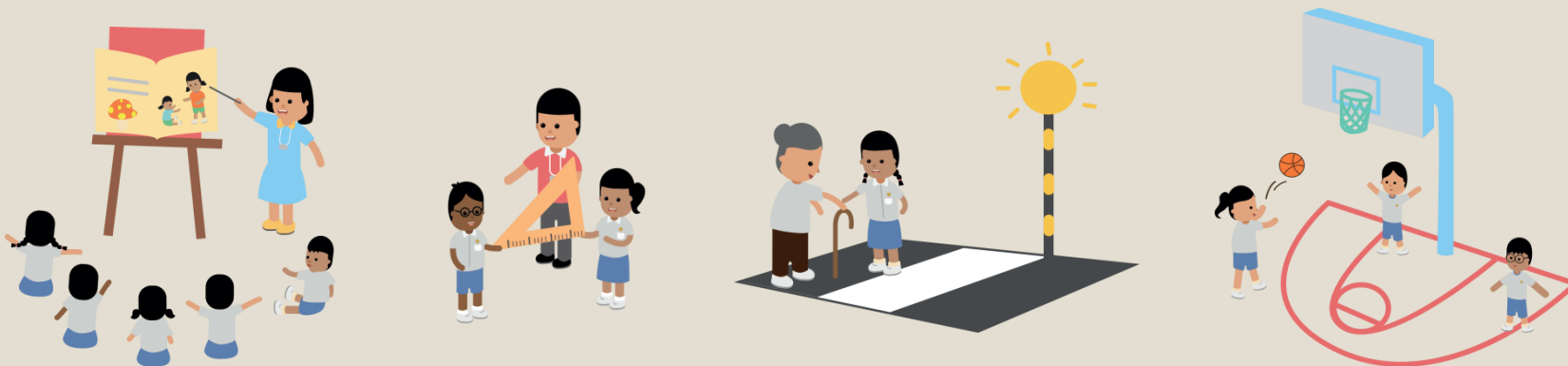
© MINISTRY OF EDUCATION, COMMUNICATION AND ENGAGEMENT
GROUP, 2019

THE PSLE CHANGES ARE PART OF A BIGGER STORY

Over the years, we have been fine-tuning the education system to help our students discover and develop their strengths and interests, while moving away from an over-emphasis on academic results.

Our PSLE scoring changes aim to:

- Reduce fine differentiation at a young age
- Recognise students' level of achievement, **regardless** of how their peers have done



HOW PSLE SCORING WORKS



FROM T-SCORE TO WIDER SCORING BANDS

(a) Reduces fine differentiation of students

- Students with similar scores in each subject will be grouped into wider bands measured in 8 ALs.

(b) Reflects a student's individual level of achievement

- Unlike the T-score system, the students' AL for each subject will reflect their level of achievement, rather than how they have performed relative to their peers.

AL	RAW MARK RANGE
1	≥ 90
2	85 – 89
3	80 – 84
4	75 – 79
5	65 – 74
6	45 – 64
7	20 – 44
8	< 20

ALs are set based on the learning objectives of the curriculum, and reflect educationally meaningful differences that enable schools to better guide students' secondary school journeys.

4 SUBJECT ALs WILL BE ADDED TO FORM THE PSLE SCORE

- The PSLE Score replaces the T-score aggregate.
- The PSLE Score ranges from 4 to 32, with 4 being the best.
- Students will be placed in secondary school courses based on their PSLE score – Express, Normal (Academic) or Normal (Technical).



ENGLISH	AL3
MOTHER TONGUE	AL2
MATHEMATICS	AL1
SCIENCE	AL2

PSLE SCORE: 8

PLACEMENT OUTCOME	PSLE SCORE
EXPRESS	4 – 20
EXPRESS / N(A) OPTION	21 – 22
N(A)	23 – 24
N(A) / N(T) option	25
N(T)	26-30, with AL7 or better in both EL <u>and</u> MA

SCORING FOR FOUNDATION LEVEL SUBJECTS



FOUNDATION LEVEL SUBJECT GRADES TO BE LESS FINELY DIFFERENTIATED

- UNDER THE NEW AL SYSTEM, TO REDUCE FINE DIFFERENTIATION AMONG STUDENTS, FOUNDATION SUBJECT GRADES WILL BE GRADED IN 3 SCORING BANDS FROM AL A TO C.
- LIKE STANDARD SUBJECT ALS, THE FOUNDATION SUBJECT ALS WILL REFLECT A STUDENT'S LEVEL OF ACHIEVEMENT, RATHER THAN HOW THEY HAVE PERFORMED RELATIVE TO THEIR PEERS.

Foundation Level AL Reflected on Result Slip	Foundation Raw Mark Range
A	75 – 100
B	30 – 74
C	< 30

FOUNDATION LEVEL SUBJECT GRADES

- FOR THE PURPOSE OF S1 POSTING, FOUNDATION LEVEL AL A TO AL C WILL BE MAPPED TO AL 6 TO AL 8 OF STANDARD LEVEL SUBJECTS RESPECTIVELY, TO DERIVE A STUDENT'S OVERALL PSLE SCORE.
- SIMILAR TO THE T-SCORE PSLE SCORING SYSTEM, THIS MAPPING IS BASED ON THE LEARNING AND ASSESSMENT LOAD OF THE SUBJECTS, AND INFORMS STUDENTS OF THEIR READINESS TO ACCESS THE CURRICULUM AT THE SECONDARY LEVEL.

Foundation Level AL Reflected on Result Slip	Foundation Raw Mark Range	Equivalent Standard Subject AL	Standard Raw Mark Range
A	75 – 100	6	45-64
B	30 – 74	7	20-44
C	< 30	8	<20

SCORING OF FOUNDATION SUBJECTS FOR S1 POSTING

- A STUDENT'S PSLE SCORE IS THE SUM OF THE FOUR AL SCORES ACROSS HIS/HER STANDARD AND FOUNDATION SUBJECTS.
- STUDENTS TAKING FOUNDATION SUBJECTS ARE ELIGIBLE FOR THE EXPRESS COURSE, AS LONG AS THEY MEET THE COURSE PLACEMENT CRITERIA.
- WITH FULL SUBJECT-BASED BANDING IN SECONDARY SCHOOLS, STUDENTS MAY ALSO TAKE SUBJECTS AT A HIGHER LEVEL FOR THOSE THAT THEY ARE STRONG IN.



ENGLISH	AL3
FOUNDATION MOTHER TONGUE	ALB
FOUNDATION MATHEMATICS	ALB
SCIENCE	AL5

PSLE SCORE: 22

PLACEMENT OUTCOME	PSLE SCORE
EXPRESS	4 – 20
EXPRESS / N(A) option	21 – 22
N(A)	23 – 24
N(A) / N(T) option	25
N(T)	26 – 30, with AL7 or better in both EL <u>and</u> MA

SCORING FOR MTL-EXEMPT AND AsL/FL STUDENTS



Scoring for MTL-exempt and AsL/FL students

- For students who are exempted from MTL or take an AsL/FL in lieu of an official MTL, their PSLE result slip will only reflect the three subjects they have taken.
- However, for the purposes of Secondary 1 posting, these students will need an assigned MTL score so that they have a PSLE score comprising four subjects. To determine the assigned MTL score, reference is made to MTL scores of other students who have achieved similar scores in English, Mathematics, and Science. This is the same approach taken in today's T-score system.
- In reviewing the score assignment for these students under the new PSLE scoring system, we needed to strike a balance between:
 - Acknowledging that students have valid reasons for seeking MTL exemption or taking an AsL/FL, and
 - Ensuring some parity between scoring for MTL exemption, Foundation MTL and Standard MTL.



Scoring for MTL-exempt and AsL/FL students

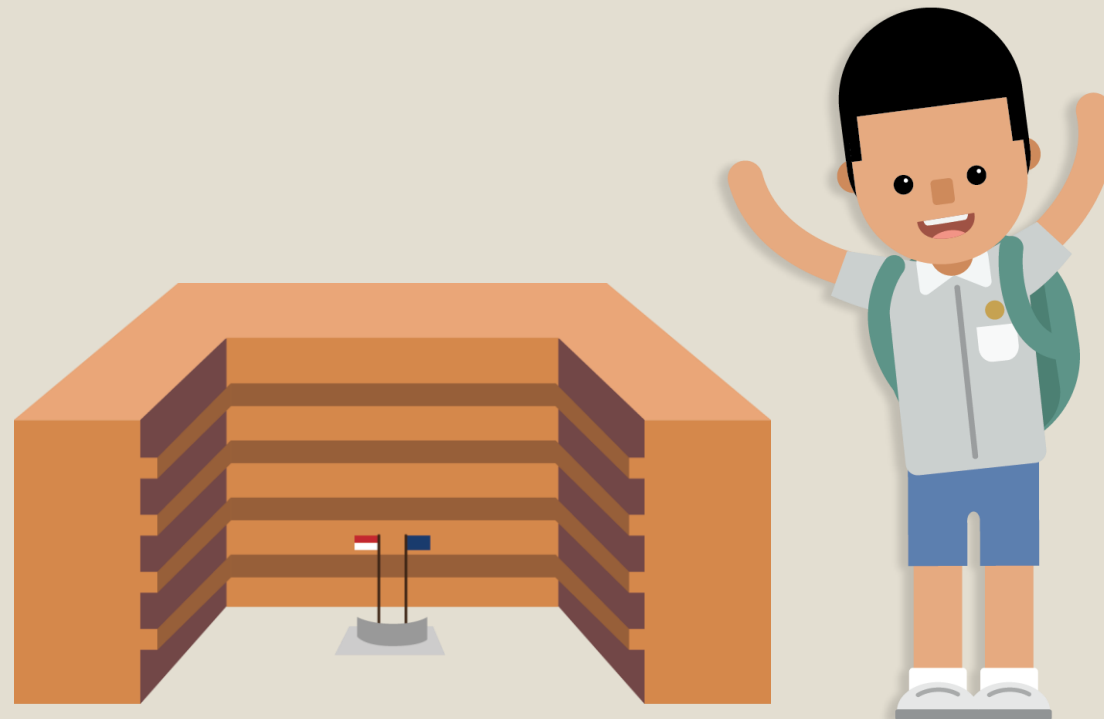
- Under the new scoring system, the assigned MTL score will :
 - Take reference from peers with similar scores for English, Mathematics and Science;
 - While maintaining parity of treatment with students who take Foundation MTL (who will score between AL 6 to 8).
- Hence, students will receive an assigned MTL score between AL 6 to 8 in PSLE.

STUDENT F STUDENT E STUDENT D STUDENT C STUDENT B STUDENT A		MTL-EXEMPT STUDENT	
Subject	AL	Subject	AL
English	2	English	2
Mathematics	4	Mathematics	4
Science	5	Science	5
Mother Tongue	7	Imputed MTL Score	7
PSLE Score: 18		PSLE Score: 18	

Referencing similar EMS scores from peers

(Figures used are for illustrative purposes only)

HOW S1 POSTING WORKS



CHOICE ORDER OF SCHOOLS WILL MATTER MORE




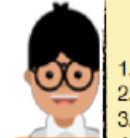
- Academic merit, i.e. the PSLE Score, remains the first criterion for secondary school posting.
- If two students with the same PSLE Score vie for a place in a school, the following tie-breakers will be used:

1. CITIZENSHIP
2. CHOICE ORDER OF SCHOOLS **(NEW)**
3. COMPUTERISED BALLOTING



Example:

4 students - Jane, Bryan, Mary and John, are vying for the last places in School A and School B.

Jane Singapore Citizen	Bryan Singapore Citizen	Mary Singapore Citizen	John Singapore PR
 16	 20	 20	 20
JANE'S SCHOOL CHOICES 1. School A 2. ... 3. ... 4. ... 5. ... 6. ...	BRYAN'S SCHOOL CHOICES 1. School B 2. School A 3. ... 4. ... 5. ... 6. ...	MARY'S SCHOOL CHOICES 1. School A 2. School B 3. School C 4. ... 5. ... 6. ...	JOHN'S SCHOOL CHOICES 1. School A 2. School B 3. School D 4. ... 5. ... 6. ...

Students with better scores will be posted first

Jane will be posted first as she has a better PSLE score, and will be posted to School A.

As Jane has taken that last place in School A, Bryan, Mary and John, having the same PSLE score, will vie for the last available place in School B.

Tie-breaker 1:
Citizenship

Bryan and Mary are Singapore Citizens and will have a priority to enter School B.

John will be tie-broken out as he is a Permanent Resident.
With no places in School B, John will be considered for School D.

Tie-breaker 2:
Choice order of schools

As Bryan ranked School B higher than Mary in his choice order of secondary schools, he will be posted to School B.

Since the last place of School B is taken by Bryan, Mary will be considered for School C.

Tie-breaker 3:
Computerised balloting

Indicative Achievement Level (AL) Cut-Off Point (COP) Ranges for Different School Types

Government & Government-aided Schools

These schools are the mainstay of our education system and offer high quality education at standardised fees. These schools offer a range of electives, applied subjects and student development programmes.

Course	Indicative AL COP range for 2019 PSLE
Express [Integrated Programme (IP)]	7 – 9
Express (O-level)	8 – 22
Normal (Academic)	22 – 25
Normal (Technical)	26 – 30

Autonomous Schools

These schools are Government or Government-aided schools that provide a wider range of programmes that seek to enhance students' learning experiences and develop their talents.

Course	Indicative AL COP range for 2019 PSLE
Express (IP)	7 – 9
Express (O-level)	8 – 16
N(A)	22 – 25
N(T)	26 – 29

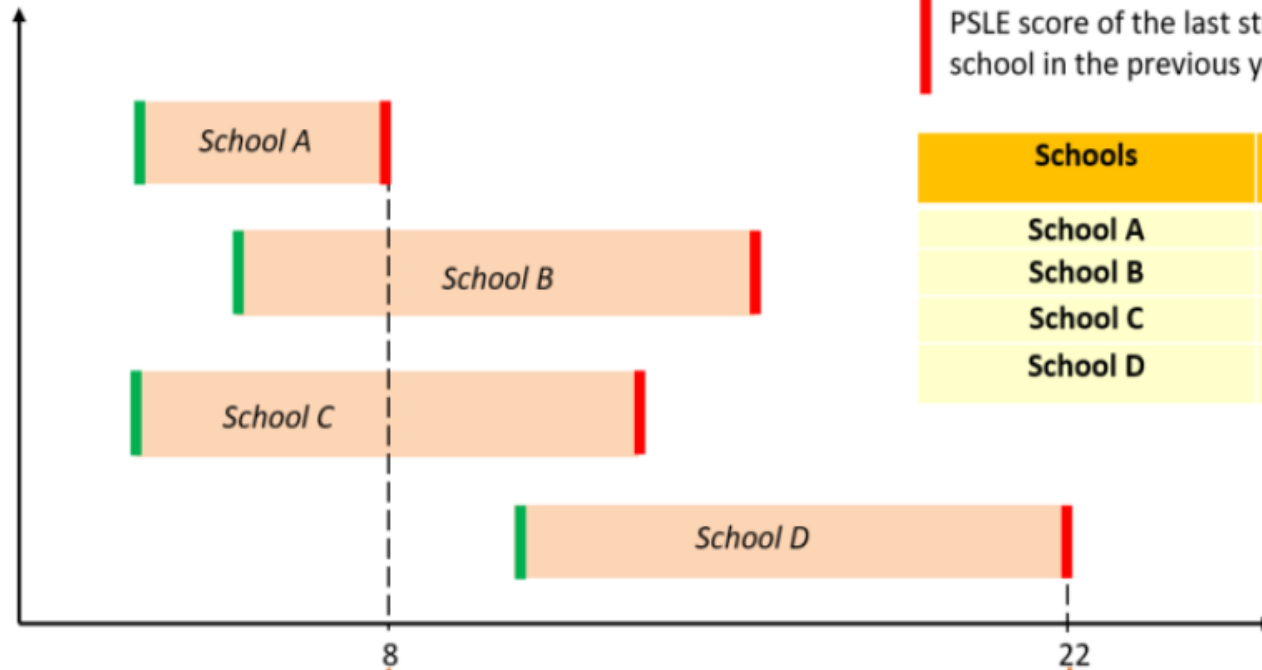
Independent schools

These schools have the autonomy to develop their curriculum and programmes to cater to their students' diverse learning needs.

Course	Indicative AL COP range for 2019 PSLE
Express (IP)	6 – 8
Express (O-level)	8 – 10

Understanding the AL COP Range

Schools of the same school type
e.g. Govt & Govt-aided (Express
course)



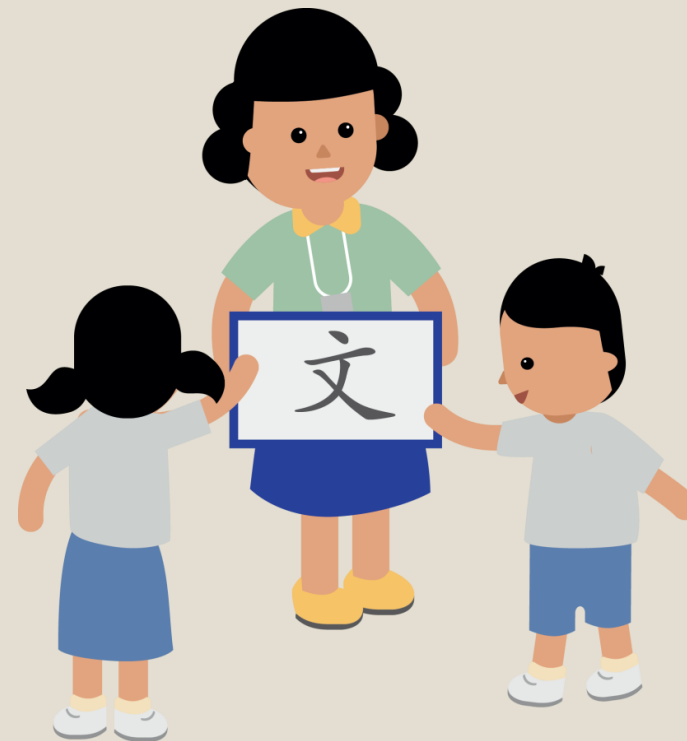
USE OF HCL FOR ADMISSION INTO SAP SCHOOLS



STUDENTS' HCL GRADES GIVE POSTING ADVANTAGE FOR SAP SCHOOLS

Based on the T-Score system, for admission to SAP schools, students are awarded bonus T-score points based on their HCL grade:

- **3 points for Distinction**
- **2 points for Merit**
- **1 point for Pass**



Use of HCL for admission into SAP schools

POSTING ADVANTAGE

- Higher Chinese Language (HCL) students will continue to receive a posting advantage for admission to SAP schools.

Prior to 2021

Currently, for admission to SAP schools, students are awarded bonus T-score points based on their HCL grade:

- 3 points for Distinction
- 2 points for Merit
- 1 point for Pass









From 2021 Onwards

- Students with better PSLE scores will be posted first, even if they did not take HCL (the 1st child with 7).
[\[See next slide for example\]](#)
- Amongst students with the same PSLE score, those with better HCL grades will be posted first. (the 2nd to 5th child with 8).
- This posting advantage applies before the tie-breakers for S1 posting.

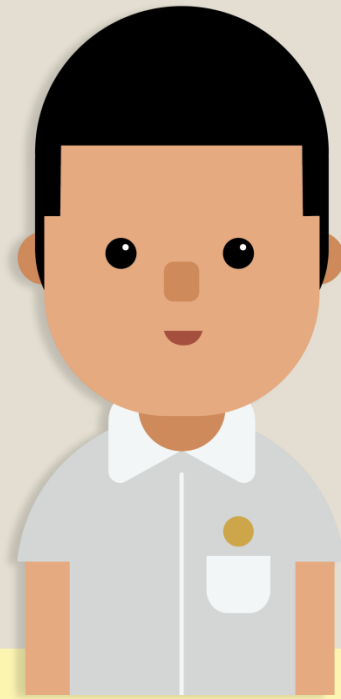
- For example, if two students have a PSLE Score of 8, the student who has a Distinction in HCL will be allocated a place in a SAP school ahead of a student who has a Merit in HCL.
- This posting advantage for admission to SAP schools applies before the tie-breakers for S1 Posting.

THIS HCL POSTING ADVANTAGE FOR ENTRY TO SAP SCHOOLS WILL CONTINUE

- Students will be ranked taking into account their performance in HCL.
 - Their HCL performance will be indicated in their PSLE Score.
- This posting advantage applies before the tie-breakers for S1 posting.

				<u>PSLE Score</u>
1st		7	NO HCL	7
2nd		8	DISTINCTION	8D
3rd		8	MERIT	8M
4th		8	PASS	8P
5th		8	NO HCL	8
6th		9	DISTINCTION	9D

ELIGIBILITY FOR SECONDARY SCHOOL HIGHER MOTHER TONGUE LANGUAGE (HMTL)



ELIGIBILITY FOR HMTL IN SECONDARY SCHOOLS

- The eligibility criteria for taking HMTL is intended to ensure that students can cope with the higher academic load, and takes reference from the current criteria.

ELIGIBILITY CRITERIA FOR SECONDARY SCHOOL HMTL

(i) PSLE Score of 8 or better

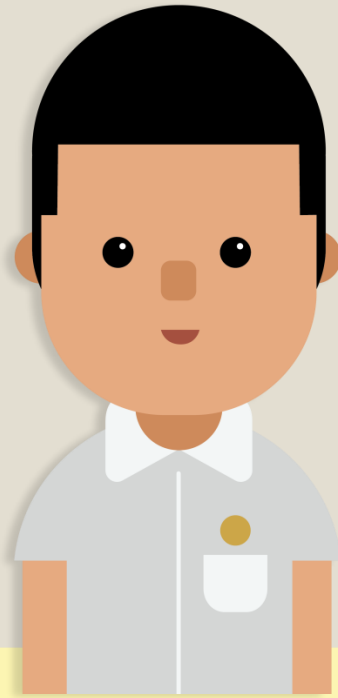
OR

(ii) PSLE Score of 9 to 14 inclusive; and attain

- AL1 / AL2 in MTL or
- Distinction / Merit in HMTL

- For students who do not meet the above criteria, secondary schools will continue to have the flexibility to offer HMTL to students, if they are assessed to have high ability and interest in MTL and are able to take HMTL without affecting their performance in other subjects.

ELIGIBILITY FOR SUBJECT BASED BANDING IN SECONDARY SCHOOL



ELIGIBILITY FOR SBB IN SECONDARY SCHOOLS

- THE SUBJECT-BASED BANDING (SECONDARY) ELIGIBILITY CRITERIA ARE AIMED AT **IDENTIFYING STUDENTS WHO ARE STRONGER IN SPECIFIC SUBJECTS**, AND WHO ARE LIKELY TO BENEFIT FROM TAKING THESE SUBJECTS AT A MORE DEMANDING LEVEL SO THAT THEY CAN FURTHER BUILD ON THEIR STRENGTHS.
- THE **AL 5 OR BETTER ELIGIBILITY** CRITERION FOR STUDENTS TO TAKE A SUBJECT AT THE EXPRESS LEVEL IS CONSISTENT WITH THE COURSE PLACEMENT CRITERIA UNDER THE NEW SCORING SYSTEM.
AL 5 IS USED AS THE QUALIFYING GRADE TO ASSESS IF STUDENTS FROM OTHER COURSES ARE READY TO TAKE THE SUBJECT AT THE EXPRESS LEVEL.
- **AL 6** ELIGIBILITY CRITERION FOR A STUDENT PLACED IN THE NORMAL (TECHNICAL) COURSE TO TAKE SUBJECTS AT THE NORMAL (ACADEMIC) LEVEL.

Sharing Items:

- ❖ AGPS Identity
- ❖ Level Programmes (P6 I-Cube camp)
- ❖ PSLE Scoring System
- ❖ **Direct School Admission (Secondary) (DSA – Sec)**

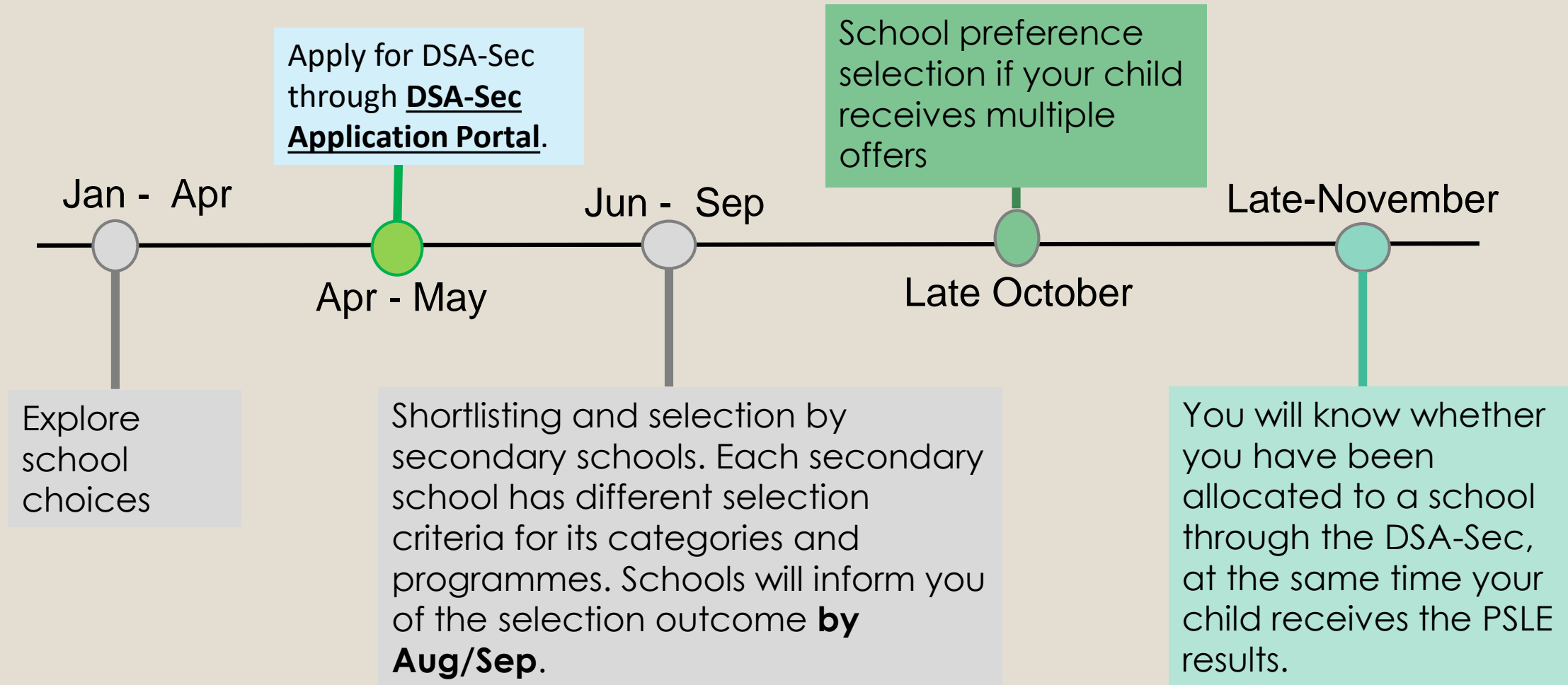
Direct School Admission – Secondary (DSA – Sec)

- Based on a diverse range of **talents and achievements in specific academic subjects or non-academic areas, beyond what the PSLE recognises.**
- Allows students to **access school programmes to develop their talents.**

Possible Areas for DSA-Sec

- Sports and Games
- Visual, literary and performing arts
- Debate and public speaking
- Academic areas e.g Science, Mathematics
- Languages and humanities
- Uniformed groups
- Leadership

Timeline for 2022 DSA-Sec application



Features of the DSA-Sec Portal

1. Centralised online applications

One-stop application for all participating secondary schools

2. Application using Singpass

- Singpass is required for log-in to portal. Only 1 parent's Singpass is required
- However, parent(s) Singpass will be required when accepting an offer

Features of the DSA-Sec Portal

3. No application fees

There are no fees charged for application

4. Making choices in the DSA-Sec portal

- Maximum of 3 choices
- Maximum of 2 areas from each school

CHOICE OF SECONDARY SCHOOLS

1. Academic Performance - PSLE results

- Comparable academic ability
- Schools that offer HMTL and Foreign Languages

2. Distance

- Transport
- More activities in Secondary School
- Cut down on travelling time

CHOICE OF SECONDARY SCHOOLS

3. Programmes offered

- Types of CCAs available
- Subjects offered e.g computing, sports science
- Niche programmes e.g Music and Art Elective Programme
- Align with child's aptitude, interests and talents

SCHOOL – HOME PARTNERSHIP

1. Students succeed when schools and parents work hand in hand to support students in **learning self-management skills, taking responsibility and building resilience.**
2. **Mutual respect and trust** forms the strong foundation for positive engagement between schools and parents.

WAYS TO SUPPORT YOUR CHILD

1. Continuous encouragement and support
2. Ensure conducive environment at home for learning
3. Monitor child's revision schedule
4. Strike a balance between studies and well-being e.g recreation, amount of sleep etc
5. Partner with teachers to bring out the best of child
6. Ensure punctuality and regular attendance

Stay connected and get updated on news and information of AGPS via

Website:



Facebook:



Please kindly provide us with your feedback
on this briefing:



THANK YOU!